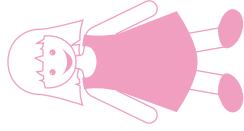
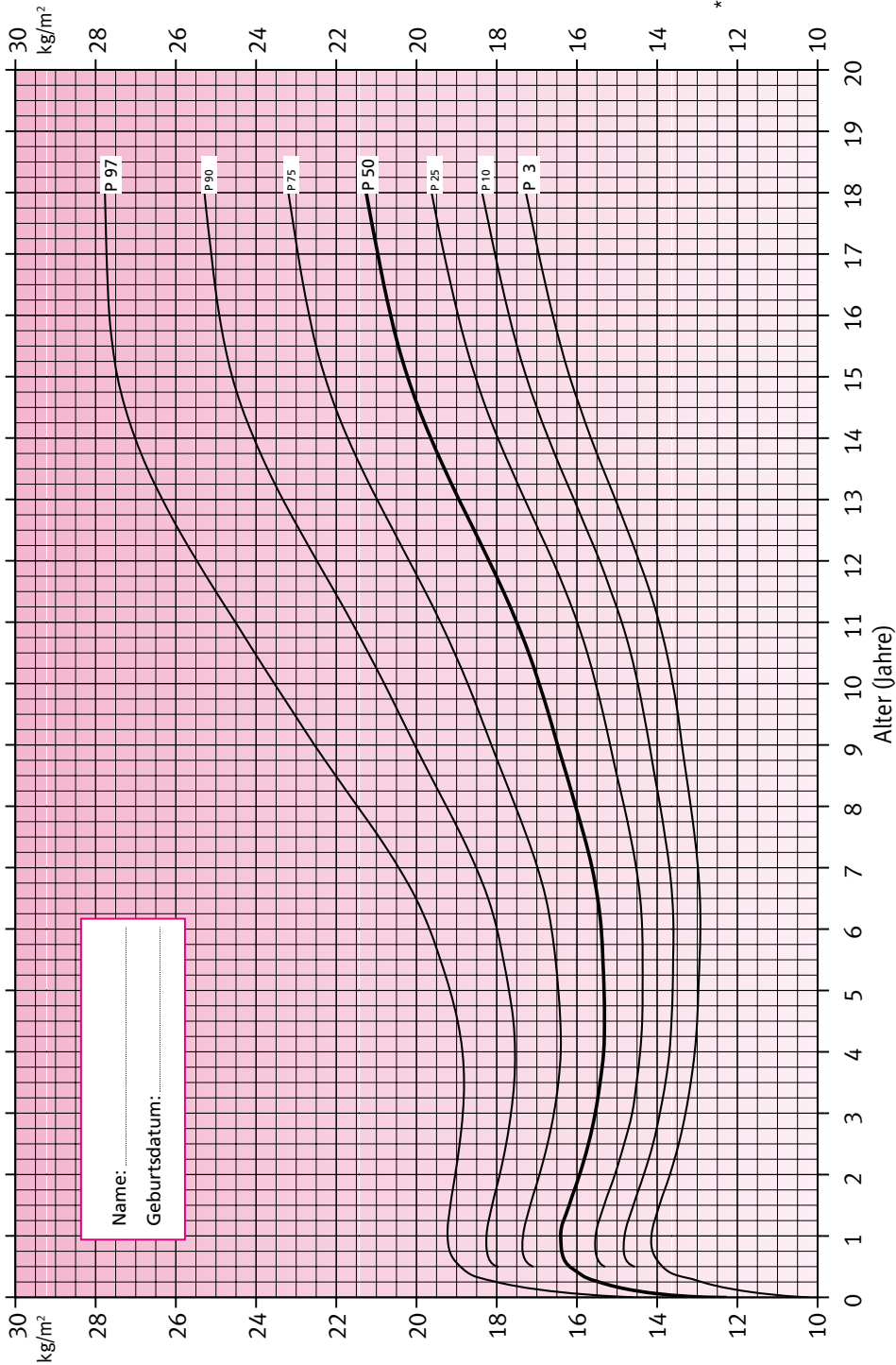


SOMATOGRAMM

Body Mass Index



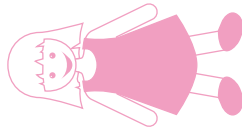
Perzentilkurven für den Body Mass Index (kg/m^2) · Mädchen 0 – 18 Jahre *



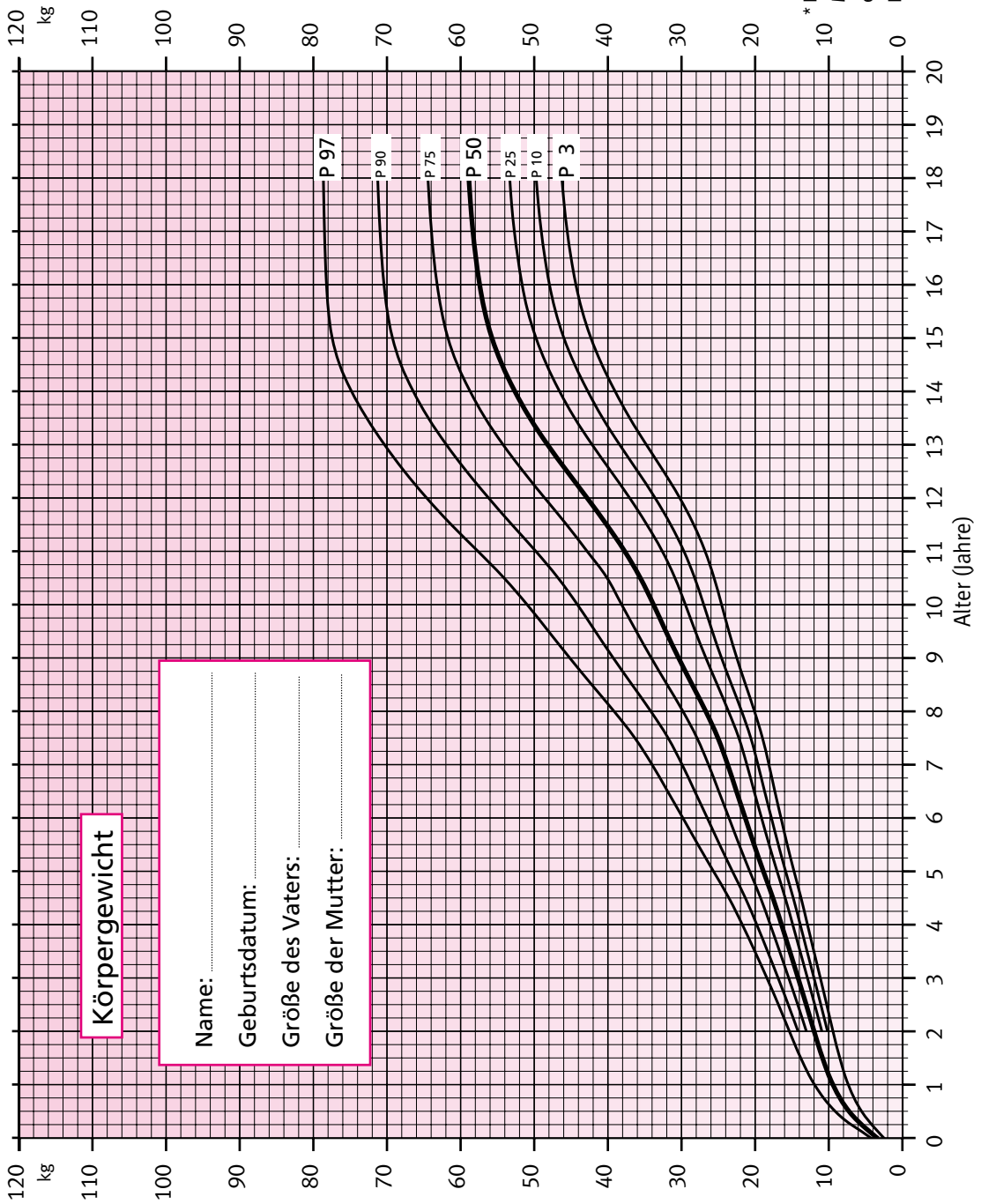
* K. Kromeyer-Hauschild,
M. Wabitsch, D. Kunze
et al.: Monatsschr.
Kinderheilk. 149 (2001)

SOMATOGRAMM

Body Mass Index



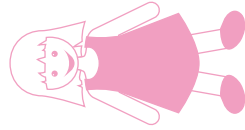
Perzentilkurven für Körpergewicht · Mädchen 0 – 18 Jahre *



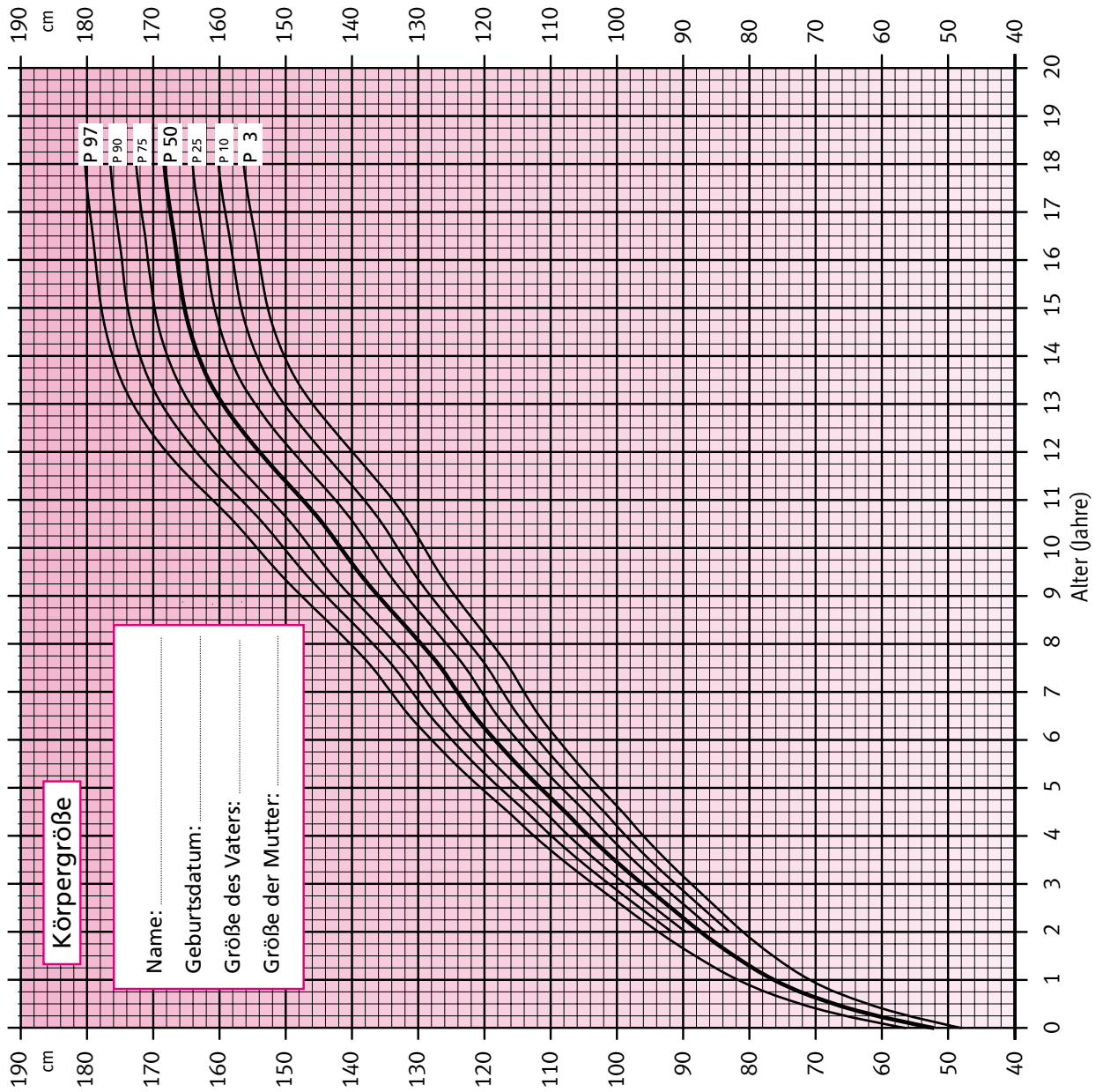
* K. Kromeyer-Hauschild,
M. Wabitsch, D. Kunze
et al.: Monatsschr.
Kinderheilk. 149 (2001)

SOMATOGRAMM

Body Mass Index



Perzentilkurven für Körpergröße · Mädchen 0 – 18 Jahre *



* K. Kromeier-Hauschild,
M. Wabitsch, D. Kunze
et al.: Monatsschr.
Kinderheilk. 149 (2001)